



SEARCH SUITS

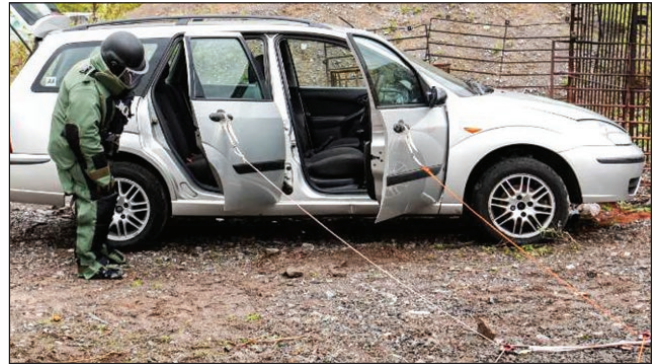
HAWKER - SS - A



HAWKER EXCEL Search Suit, Facelift, Medium Fragmentation
HAWKER EXCEL SS FL A

Key Features

- Full ensemble <26.5kg with helmet, visor and 2 plates
- Good Mobility provided by ergonomic design
- Good Zonal Fragmentation Protection
- Standard MICH helmet and Visor providing V50 >650m/s and 550m/s
- 2 x Paraclete Omega 10"x12" Plates providing resistance to 7.62x51mm M80, 7.62x39mm PS ball and 5.56x45mm M193



Additional Features

- Quick release jacket
- Integral Back Protector integrated into the jacket
- A cooling suit option
- Light weight blast plate options to provide V50 >1200m/s to the front
- Easy entry, side opening trousers
- Additional Groin Protection
- Compatible with a range of accessories

PROTECTION LEVEL	V50 (m/s)	V50 (fps)
Jacket Front	600	1960
Jacket Back	450	1470
Collar Rear	450	1470
Collar Front	600	1960
Sleeves	450	1470
Hand Mitts	450	1470
Trousers Rear	450	1470
Trousers Thigh	700	2290
Trousers Shin	650	2130
Groin Front	600	1960
Groin Rear	600	1960
Over boots	450	1470
Helmet/Visor	650/550	2130/1800
Blast Plate	-	-
NOMINAL WIEGHT	kg	lbs
Hawker Excel SS FL A Search Suit	20.8	45.8
MICH Helmet and Ballistic Visor	3.3	7.3
2 x Paraclete Omega Plates	2.4	5.3
Total Weight Hawker Excel SS FL A	26.5	58.4



V50 Fragmentation testing has been completed in accordance with STANAG 2920 and MIL-STD-662F protocols (17gr FSP) in independent test houses. All nominal weights based upon Medium Suit

United Shield International Limited

56 South Way • Walworth Industrial Estate • Andover, Hampshire • SP10 5AF, United Kingdom

44 1264 363 606 • sales@unitedshield.com