



SEARCH SUITS

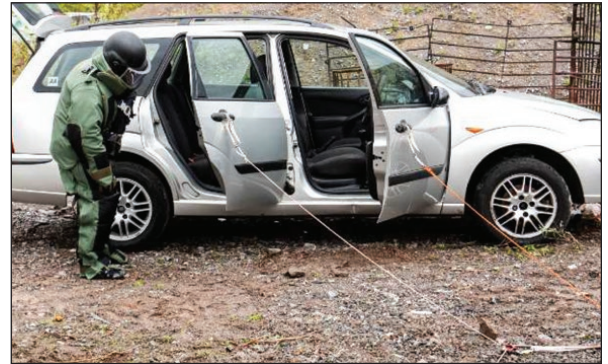
HAWKER - SS - H



HAWKER EXCEL Search Suit, Facelift, High Fragmentation
HAWKER EXCEL SS FL H

Key Features

- Full ensemble <28kg with helmet, visor and 2 plates
- Good Mobility provided by ergonomic design
- Excellent Zonal Fragmentation Protection providing World Leading performance
- Standard MICH helmet and Visor providing V50 >650m/s and 550m/s
- 2 x Paraclete Omega 10"x12" Plates providing resistance to 7.62x51mm M80, 7.62x39mm PS ball and 5.56x45mm M193



Additional Features

- Quick release jacket
- Integral Back Protector integrated into the jacket
- A cooling suit option
- Light weight blast plate options to provide V50 >1200m/s to the front
- Easy entry, side opening trousers
- Additional Groin Protection
- Compatible with a range of accessories

PROTECTION LEVEL	V50 (m/s)	V50 (fps)
Jacket Front	620	2030
Jacket Back	560	1830
Collar Rear	560	1830
Collar Front	620	2030
Sleeves	560	1830
Hand Mitts	450	1470
Trousers Rear	450	1470
Trousers Thigh	720	2360
Trousers Shin	620	2030
Groin Front	620	2030
Groin Rear	450	1470
Over boots	475	1550
Helmet/Visor	650/550	2130/1800
Blast Plate	-	-
NOMINAL WIEGHT	kg	lbs
Hawker Excel SS FL H Search Suit	22.0	48.4
MICH Helmet and Ballistic Visor	3.3	7.3
2 x Paraclete Omega Plates	2.4	5.3
Total Weight Hawker Excel SS FL H	27.7	61.0



V50 Fragmentation testing has been completed in accordance with STANAG 2920 and MIL-STD-662F protocols (17gr FSP) in independent test houses. All nominal weights based upon Medium Suit

United Shield International Limited

56 South Way • Walworth Industrial Estate • Andover, Hampshire • SP10 5AF, United Kingdom

44 1264 363 606 • sales@unitedshield.com